



Z163.720-11===

## Accessories

DB096.070



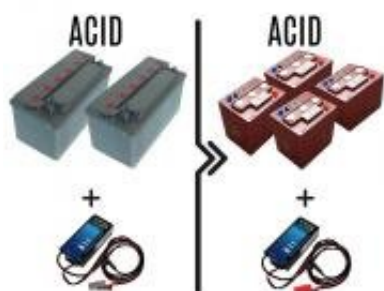
Upgrade to 50/70A AGM batteries

DB096.157



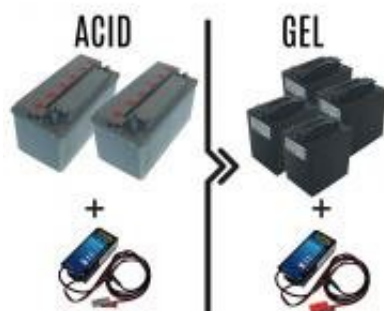
Upgrade to 118/157A batteries

## DB096.240-1



Upgrade to 180/240A batteries Acid ,batt.charger incl.

## DB096.200-1



Upgrade to 180/240A GEL batteries ,batt.charger incl.

## DR213.517-6



Heavy duty axles and traction wheels upgrade (1000 kg load capacity)

DR213.114-7



Price diff. for reinforced axles and from standard to non-marking wheels (3 wheels)

R213.700



Turf tyres + snow chains kit

Z163.850



10 kg ballasts

T528.700



Ballasts fitting kit

Z099.718===



Pole mounted flashing beacon

E506.750===



Key Pad on/off

**E204.700===****Assembled hour meter****E505.710****Slow/fast switch****Z366.710===****Rear wheel guard**

A020.810===



Basket 730x730xh160 mm

A020.800===



Basket 730x730xh220 mm

ZG40.003.700===



Adjustable connection w/castor wheel

A199.705



Drop pin Ø16 mm

ZG40.005.700===



Drop pin Ø20 mm

A199.706



Drop pin Ø40 mm

A199.707



Tow ball pin coupling

A190.720===



Galvanized Bin Hitch

ZG40.004.700===



Supporto braccio pivotante



ZG60.021.700===



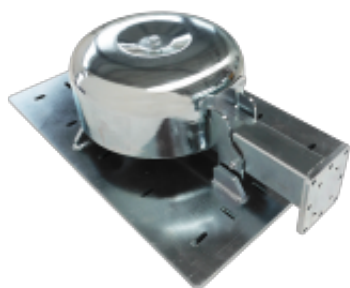
Pivoting connection

ZG60.026.700===



Roll box hitch (50x50)

ZGM101.700===



Swivel hitch